



Palmers Road, London, E2

BUTLER  STAG



Situated in one of the premier Bethnal Green developments and offering views over Victoria Park and the regents Canal is this two bedroom Apartment.



- Two Bedroom
- Canal Views
- Fitted Kitchen
- Close to Transport
- Private Balcony
- Modern Bathroom
- Light and Spacious
- Unfurnished

Located on Palmers Road E2 is this modern two bedroom apartment with views over the Regents Canal and Victoria Park, being just a short walk from both and the local amenities in the surrounding area.



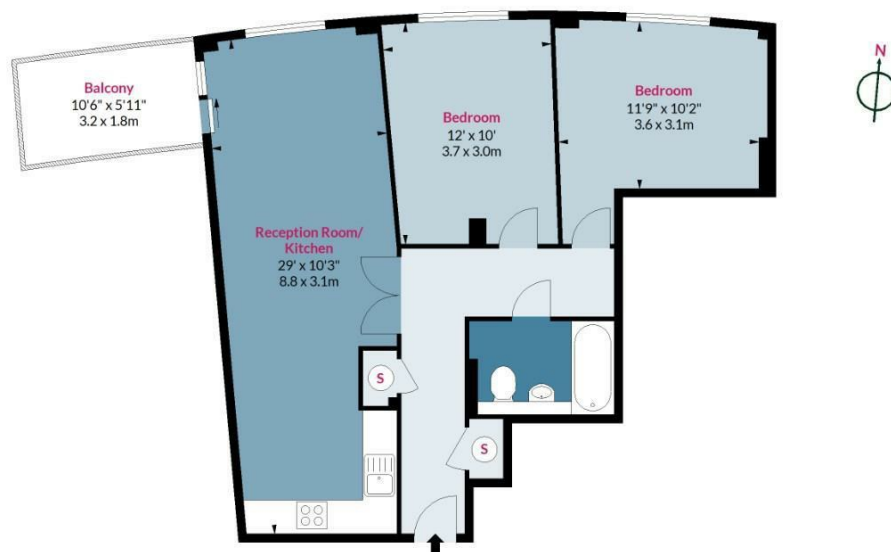
The property comprises of two double bedrooms, modern bathroom, fitted kitchen and benefits from a private balcony. The full length floor to ceiling windows allow a cascade of light to flood in each room giving light and spacious living. Situated within an area that provides the needs of the city resident it is within reach of three stations Bethnal Green, Mile End, and Stepney Green giving access into the city and beyond.



Palmers Road, E3

Approx. Gross Internal Area 716 Sq Ft - 66.52 Sq M
Approx. Gross Balcony Area 63 Sq Ft - 5.85 Sq M

BUTLER & STAG



Seventh Floor

Floor Area 716 Sq Ft - 66.52 Sq M



Measured according to RICS IPMS2. Floor plan is for illustrative purposes only and is not to scale. Every attempt has been made to ensure the accuracy of the floor plan shown, however all measurements, fixtures, fittings and data shown are an approximate interpretation for illustrative purposes only. 1 sq m = 10.76 sq feet.

lpaplus.com

IMPORTANT NOTICE - These particulars have been prepared in good faith and they are not intended to constitute part of an offer or contract. We have not performed a structural survey on this property and the services, appliances and specific fittings have not been tested. All photographs, measurements, floor plans and distances referred to are given as a guide and should not be relied upon.

BUTLER & STAG

☎ 020 8102 1236

🏠 508 Roman Road, Bow, London, E3 5LU

✉ bow@butlerandstag.com

www.butlerandstag.uk